

Neighbourhood Profile Update Cambridge City West Neighbourhood

August 2010



Steve Kerridge,
Neighbourhood Policing
Inspector

Lynda Kilkelly
(Community Safety),
Cambridge City Council



1. INTRODUCTION	2
Aim	2
Methodology	2
2 PREVIOUS PRIORITIES & ENGAGEMENT ACTIVITY	3
Previous Priorities	3
Engagement Activity	3
3 AN INTRODUCTION TO ASB IN CAMBRIDGE CITY	4
4 EMERGING ISSUES	5
5 CURRENT CRIME & INCIDENT LEVELS	7
6 RECOMMENDATIONS	10

1. Introduction

Aim

The aim of the Neighbourhood profile update is to provide an overview of action taken since the last reporting period, identify ongoing and emerging crime and disorder issues, and provide recommendations for future priorities and activity in order to facilitate effective policing and partnership working in the area.

The document should be used to inform multi-agency neighbourhood panel meetings and neighbourhood policing teams, so that issues can be identified, effectively prioritised and partnership problem solving activity undertaken.

Methodology

This document was produced using the following data sources:

- Crime and Incident data, from March 10 – July 10 and as a comparison data from October 09 –February 10, and March 09 – July 09.
- Information from the Neighbourhood Policing teams, August 2010
- Community intelligence.

2. Previous Priorities & Engagement Activity

Previous Priorities

At the neighbourhood panel meeting on 8th April 2010, the following issues were adopted as priorities. The tables below summarise action taken and the current situation regarding the priorities which were set:

Anti-social use of cycles across the City West neighbourhood.	
Objective	<p>The aim of this plan was to:</p> <ul style="list-style-type: none"> • Gather and present information back to the committee concerning the findings of police and partner action at specific locations. • Seek where appropriate to take enforcement action and educate offenders as to the issues raised by the area Committee.
Action Taken	<p>City County Council figures show that approximately 1,333 incidents of anti-social cycling occurred between March and June compared with 1,133 during the same period the previous year. During the 2010 period, the majority occurred in Sidney Street (271, compared with 253 during the 2009 period), Trinity Street (255, compared with 229 during the 2009 period), Bridge Street (200, compared with 231 during the 2009 period), Market Street (183, compared with 135 during the 2009 period), Petty Cury (154, compared with 110 during the same period the previous year).</p> <p>Police patrols to tackle this priority were combined with the anti-social use of vehicles priority to seek to ensure that both users of both motorised and non-motorised modes of transport use them safely and lawfully.</p> <p>During the period, penalty notices were used on 15 occasions for more serious or dangerous breaches of the law by cyclists. Numerous other engagements took place during patrols with those using cycles, in many cases with tourists and foreign student parties.</p> <p>In the latter case, the successful Operation Columbus initiative delivering public safety and cultural awareness advice to the City's many foreign language schools has continued.</p>
Current Situation	<p>It is extremely difficult to judge the impact of this work by means of traditional methods such as levels of incidents reported. Officers are sometimes stopped and take complaints of nuisance from members of the public during patrols, but these acts are not traditionally reported and incidents for attendance raised and assigned.</p> <p>There continue -and will continue to be- occasions where officers during the course of patrols are actively identifying the dangerous or anti-social use of cycles first hand and appropriate actions are taken.</p> <p>Being vigilant for such acts is standard practice for all officers irrespective of their team as they carry out their duties across the City West neighbourhood.</p>

Continue or Discharge?	Discharge
-------------------------------	-----------

Vehicle-related anti-social behaviour (ASB) across Market Ward.	
Objective	<p>The aim of this plan was to:</p> <ul style="list-style-type: none"> • Gather and present information back to the committee concerning the findings of police and partner action at specific locations. • Seek where appropriate to take enforcement action and educate offenders as to the issues raised by the area Committee.
Action Taken	<p>Officers identified minor traffic offences and issued fixed penalty notices on 40 occasions during the period. Once again, most of these were in response to complaints concerning taxis over-ranking at St. Andrew's Street.</p> <p>A further 3 drivers were reported for summons to attend court for more serious offences for which fixed penalties were not a disposal option.</p>
Current Situation	<p>There were 35 incidents of vehicle-related nuisance reported to police during the 5 month period of review, which is encouragingly low and low in comparison to other parts of the City. There are no patterns in these reports in terms of location or behaviour giving rise to the call.</p> <p>As above, remaining vigilant is part of patrolling for all staff especially in key hotspot areas identified during community consultation.</p>
Continue or Discharge?	Discharge.

Anti-social Congregation in Public Spaces - Market Ward	
Objective	<p>The aim of this plan was to:</p> <ul style="list-style-type: none"> • Secure a reduction in reports of ASB and Streetlife -related crime in the target areas compared to the same time period immediately before action plan activity and a reduction compared to the same period last year. • Seek to evidence qualitative improvements in the quality of life of those resident in, working at and visiting the areas where the congregations and alleged anti-social behaviour is occurring.

Action Taken	<p>The City now has no dispersal areas (Section 30 of the Anti-Social Behaviour Act 2003) within its limits for the first time since 2004, following the withdrawal of the remaining area in City West during the period. This decision was made following extensive analysis and public consultation in-keeping with the recently revised protocol between Police and the City Council concerning such legislation.</p> <p>Officers still have powers under separate legislation to disperse persons from areas who have been acting anti-socially and whose behaviour is linked to the consumption of alcohol.</p> <p>These preventative powers were used effectively during The Big Weekend event on Parker's Piece where large groups of Streetlife community drinkers were causing unacceptable disruption and concern for families during the early stages of each event day. The use of these powers ensured there were minimal issues relating to drunken disorder or criminal offences committed as the day wore on.</p> <p>Daily patrols of public spaces continue to be undertaken by neighbourhood staff. There is strong evidence that residents and traders are reporting to the Police directly their concerns to allow informed patrolling to take place to engage the more problematic and challenging individuals and groups.</p>
Current Situation	<p>Although officers and Street Outreach Services continue to monitor, identify and patrol hotspot areas across City West and East borders and some reports remain of anti-social congregation. Though there has been a marked decrease in calls for service and public feedback on this issue.</p> <p>It remains desirable to maintain patrols and continue work in hotspot areas and engagement with more problematic individuals through multi-agency channels.</p>
Continue or Discharge?	Suggest continue

Engagement Activity

Engagement events permitting members of the public to meet the City West and other Cambridge City Neighbourhood Policing Teams are listed on the Constabulary's website.

They include monthly surgeries at The Central Library, Co-op, Histon Road and The Newnham Croft School

For more private matters, officers will be happy to arrange a meeting at your convenience or discuss matters via telephone.

For further details please visit www.cambs.police.uk and look for the "My Neighbourhood" link or call 0345 456 456 4.

3. An Introduction to Anti-Social Behaviour (ASB) in Cambridge City

It has been noted from recent Cambridge City Neighbourhood Panel Meetings that Anti-social behaviour (ASB) issues are at the forefront of public concern. To address these concerns, this document will now provide more information about the types of ASB issue faced in each Ward

through the inclusion of an additional breakdown of ASB types. A summary of emerging issues within crime will still be provided.

When an incident is reported, it is given a Closure Class which groups the incident under specific categories. The specific closure classes for those incidents defined as ASB are included in Table.1

Table.1 ASB Closure Class Definitions

ASB	Description
AS02.2	Street Drinking
AS03.1	Begging/Vagrancy
AS04.1	Prostitution related activity
AS05.1	Abandoned Vehicle (not stolen/obstruction)
AS05.2	Vehicle Nuisance/Inappropriate Veh use
AS06.0	Noise
AS07.1	Litter/Drugs Paraphernalia
AS07.2	Inappropriate - Use/Sale/Possession of Fireworks
AS07.5	Rowdy/Nuisance - Neighbours
AS07.6	Rowdy or Inconsiderate Behaviour
AS08.1	Hoax Call to Emergency Services
AS09.1	Animal Problems
AS10.1	Malicious/Nuisance communication
AS10.2	Regular caller - HIST INFO
AS11.1	Trespass
AS12.1	Prejudice Incident

4. Emerging Issues

Neighbourhood trends

Total crime in City West Neighbourhood has increased during the March to July period, compared to the preceding 5 months (2232 and 1908 offences respectively). This current level is also higher than the same comparative months last year where there were 2187 recorded offences. There have been increases in all crime types but the increases have been most substantial in thefts of cycles, both dwelling and non-dwelling burglaries and robberies. Levels of reported ASB are also higher than those experienced in the preceding period but lower than those for the same period in 2009.

Newnham

- Total crime in Newnham has increased compared to the previous period but levels are lower than the same period last year.
- There were 23 dwelling burglaries in this period compared to 11 offences in the previous period and 27 offences in the same period last year. This increase is largely attributable to 10 burglaries which occurred in the Colleges. It is believed that these offences may have been committed by a known individual who tends to target student rooms but has now been arrested.

- Violent crime offences have decreased by 3 compared to the previous period and are a third of those experienced in the comparable months last year. There were no notable trends but two offences have involved a male exposing himself around the area of Fen Causeway.
- There has been an increase in vehicle crime compared to the preceding months and the same period last year. This has been particularly noticeable in thefts from vehicles which have nearly doubled compared to levels between October 2009 and February 2010. There appears to be a hotspot around Cranmer Road with one stolen vehicle and six thefts from vehicles. Offences have occurred at a variety of times and windows have typically been smashed and cash stolen from inside. There have also been a number of offences around the area of Wilberforce Road and Clarkson Road.
- Cycle theft offences have increased from 40 to 63 which is also higher than the same period last year. Over half of these occurred at colleges in the area.
- ASB incidents have increased from 49 offences in the previous period to 74 offences in this period but this level is lower than that experienced last year (98). Most incidents appear to be fairly dispersed in location and content but with the warmer weather, there has been a recent increase in incidents around the Mill Pond area with youths gathering and jumping into the river.

Environmental Issues:

Between March and June 2010 there were 10 reports of abandoned vehicles in the ward, compared with 7 during the same period the previous year. This included 3 vehicles, which were later claimed by their owners and 2, which were not on site following inspection. In addition, illegally parked stickers were applied to a further two vehicles. There were no specific hotspots during either period.

Between March and June 2010 there were 12 reports of fly tipping in the ward compared with 21 during the same period the previous year. All were removed within 24 hours and there was sufficient evidence to issue warning letters to 3 domestic offenders. In addition, waste transfer documentation was requested from 2 trade offenders. Hotspots during the 2010 period were Lammas Land (4, compared with 14 during the same period the previous year) and Fen Causeway (3). The offences at Fen Causeway all resulted in warning letters.

16 derelict cycles were dealt with between March and June 2010, compared with 27 during the same period the previous year. During the 2010 period, Lammas Land (5) was a hotspot compared with Cranmer Road (4), Grange Road and Barton Road (both with 3) during the same period the previous year.

Between March and June 2010, there were no needles reported, compared with 33 during the same period the previous year.

Castle

- Total crime in Castle shows a higher level than the preceding period and for the same time frame last year. This increase is mainly attributable to elevated levels of 'burglary other', cycle theft and violent crime. Other crime types have remained quite stable.
- Levels of non dwelling burglaries have increased from 10 to 25 over the last 5 months. A third of these have related to burglaries of sheds or garages but the majority were from a mixture of commercial premises, offices or departments at the University.
- There has been an increase in thefts of vehicles from none in the preceding period and only 1 this time last year to 4 between March and July this year. One offence involved the theft of a motorcycle and two offences occurred on consecutive days at the Madingley Road Park and Ride site.
- Cycle theft offences have increased from 52 in the previous period to 70 in this one, a level higher than the comparable period in 2009 (65). Frequently affected locations include the

colleges as well as the streets closest to the main routes of Huntingdon Road, Castle Street and Magdalene Street.

- ASB incidents have increased compared to the preceding period (56 and 74) but are slightly lower than last year (80). ASB incidents have been quite dispersed during this period although there is a small cluster around the streets off Huntingdon Road, many of which refer to complaints of anti-social noise or issues with parking and vehicles causing obstructions.

Environmental Issues:

Between March and June 2010 there were 11 reports of abandoned vehicles in the ward, compared with 4 during the same period the previous year. This included 3 vehicles, which were not on site following inspection and one vehicle, which was referred to the Council's Housing Department. Another vehicle was referred to the police. In addition, 3 CLE26 notices were issued to offenders on behalf of the DVLA for not displaying road tax on a public highway and will result in a fine issued by the DVLA. Another vehicle was impounded on behalf of the DVLA for not having valid road tax, but was subsequently released following payment by the owner of the DVLA fine. Oxford Road (3) was a hotspot during the 2010 period, but there were no hotspots during the same period the previous year.

Between March and June 2010 there were 8 reports of fly tipping in the ward compared with 13 during the same period the previous year. All were removed within 24 hours and there was sufficient evidence to issue a warning letter to a domestic offender. There were no specific hotspots during either period.

38 derelict cycles were dealt with between March and June 2010, compared with 27 during the same period the previous year. Madingley Road (10, from the Park and Ride site), St Stephen's Place, Sherlock Close/Road and Huntingdon Road (all with 3) were the hotspots during the 2010 period, compared with Shelly Garden/Row (8) and Huntingdon Road (3) during the same period the previous year.

Between March and June 2010, there were no needles reported, compared with one during the same period the previous year.

Market

- Total crime in Market Ward has increased from 1614 offences to 1784 in the current period and this level is slightly higher than that experienced between March and July last year (1735). This is largely due to increases in burglaries, violent crime, robbery and cycle theft.
- There has been an increase in both dwelling burglaries and non-dwelling burglaries compared to the preceding 5 month period but levels are somewhat comparable to those experienced last year. There were three burglaries around the area of Park Street but mainly offences have been quite spread out geographically. Offences have predominantly occurred during daylight hours and laptops appear to have been frequently taken. The non-dwelling burglaries have mainly occurred in commercial properties and temporarily occupied student accommodation.
- Violent offences have increased from 306 in the preceding period to 327 and are also higher than the comparable months in 2009 (307). Over half of offences have been classified as Actual Bodily Harm or Common Assaults and there have been 60 offences crimed as causing the public fear, alarm or distress, which have largely involved drunken behaviour or individuals swearing at members of the public. Locations were concentrated around night-time entertainment establishments such as The Regal, The Fez Club and Ballare particularly on Friday and Saturday nights and in the early hours of the morning.
- There were 20 robberies in this period compared to 14 in the previous period and 27 in the same period last year. These offences were at their highest level in April and have largely

occurred around the green spaces in the City, particularly Jesus Green although Christs Pieces, Midsummer Common and Parkers Piece have also been affected. Most offences have occurred during the evening through to the early hours of the morning, especially on Fridays and Saturdays. Items such as cash, iPods and mobile telephones were typically taken.

- As seen in Newnham and Castle Wards, thefts of cycles have also increased in Market from 274 in the preceding period to 383 between March and July this year. This is also an increase compared to levels last year. Thefts peaked in June and were highest on Saturdays and during afternoons and evenings. Common locations for thefts of cycles were Parkside and around Parkers Piece (31), Regent Street (22), Trumpington Street (21), the Grafton Centre (17) and St Andrews Street (16).
- Levels of reported ASB incidents in the Market area have increased compared to the preceding months but are lower than the comparable period in 2009. There were 74 incidents of begging or vagrancy reported, largely in the area of Regent Street, Sidney Street and Burleigh Street but levels are not increasing and have remained quite consistent each month. Incidents are a mixture of people sleeping rough, individuals begging and some groups of people drinking in the street. Over half of the rowdy and inconsiderate incidents were reported between Friday and Sundays, particularly during the evening and early hours of the morning in the main areas associated with the pubs and clubs.

Environmental Issues:

Between March and June 2010 there was one abandoned vehicle reported compared with 5 during the same period the previous year. There were no hotspots during either of these periods.

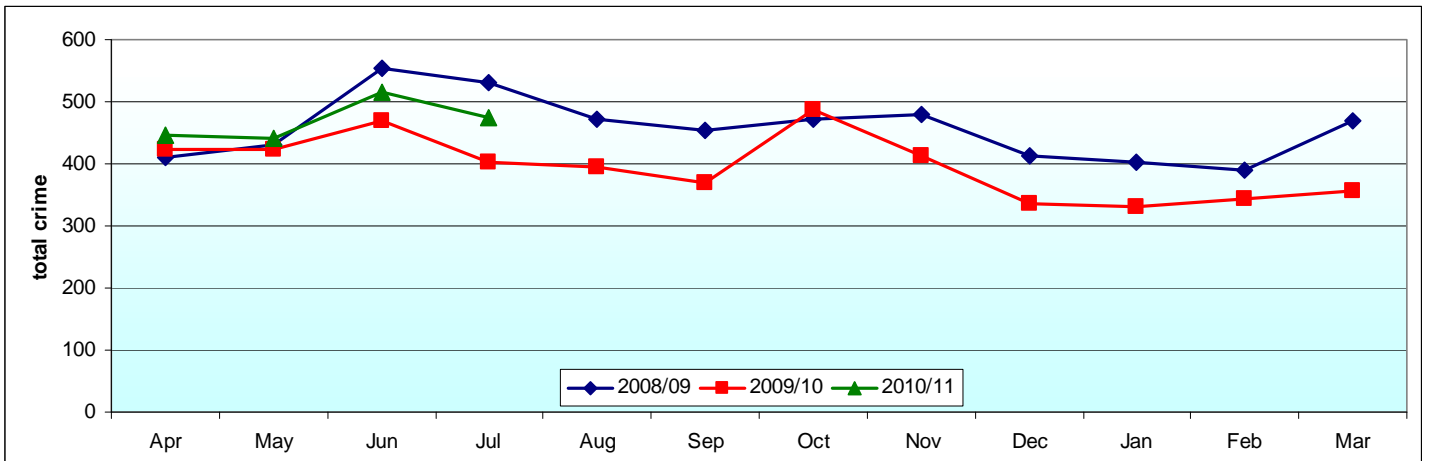
Between March and June 2010 there were 86 reports of flytipping in the ward compared with 145 during the same period the previous year. All were removed within 24 hours and there was sufficient evidence to issue warning letters to 6 domestic offenders. In addition, 2 verbal warnings were issued to trade offenders and waste transfer documentation was requested from a further 8 trade offenders. Market Hill/Square/Street was a hotspot during the 2010 period with 12 reports, compared with 19 during the same period the previous year. Sidney Street (5) and St Andrews Street, Regent Street, Jesus Lane and Miltons Walk (all with 4) were also the main hotspots during the 2010 period. Offences in Miltons Walk and St Andrews Street resulted in two of the formal warning letters being sent. During the same period the previous year, Corn Exchange Street (9), Trinity Street, Market Passage, Market Hill (all with 7) and St Mary's Passage and Regent Street (6) were the main hotspots.

236 derelict cycles were dealt with between March and June 2010, compared with 297 during the same period the previous year. The main hotspots during the 2009/10 period were Sidney Street (37), Market Hill/Square/Street (19), Downing Street (18), Guildhall Street (15). Main hotspots during the same period the previous year were Downing Street (16), Trumpington Street, Sidney Street, Market Hill/Square/Street (all with 14) and Trinity Street, Parkside, East Road (12).

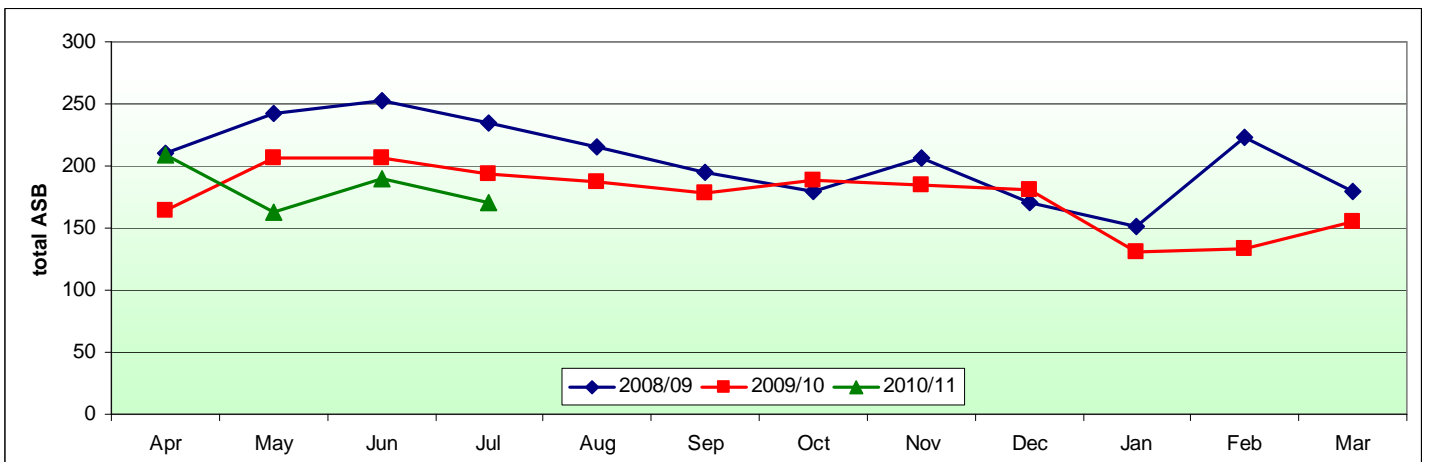
Between March and June there were 161 needles reported, compared with 96 during the same period the previous year. In the 2010 period this included a large one off report of 50 needles at garages in King Street and another of 20 needles outside a church in Trinity Street. In addition, 18 needles were removed from Salmon Lane, 11 from Wellington Court, 8 from the Grafton West Car Park and 6 from Fair Street. In the 2009 period this included 36 needles, which were removed from the Grafton West Car Park, 15 from Parkside, 14 from Adam and Eve Street, 10 from Post Office Terrace and 8 from Christ Pieces.

5. Current Crime and Incident Levels

Total Crime



Total ASB



Current Crime and Incident Levels in Neighbourhood, by Ward

			Dwell. Burg.	Other Burg.	Violent Crime (excl. Robbery)	Robbery	Theft of Vehicle	Theft from Vehicle	Cycle Theft	Theft from Shop	Criminal Damage	Other Crime	TOTAL CRIME	TOTAL ASB
N'hood	City West	Mar 10 – Jul 10	68	78	351	24	12	86	516	347	134	616	2232	887
		Oct 09 – Feb 10	47	42	327	15	5	66	366	329	128	583	1908	818
		Mar 09 – Jul 09	77	68	357	30	11	69	428	332	163	652	2187	950
Wards	Newnham	Mar 10 – Jul 10	23	14	10	3	5	41	63	2	11	59	231	74
		Oct 09 – Feb 10	11	8	13	0	1	22	40	2	10	26	133	49
		Mar 09 – Jul 09	27	18	30	1	7	30	44	1	26	61	245	98
	Castle	Mar 10 – Jul 10	29	25	14	1	4	22	70	2	13	37	217	74
		Oct 09 – Feb 10	28	10	8	1	0	18	52	2	19	23	161	56
		Mar 09 – Jul 09	32	16	20	2	1	22	65	4	17	28	207	80
	Market	Mar 10 – Jul 10	16	39	327	20	3	23	383	343	110	520	1784	739
		Oct 09 – Feb 10	8	24	306	14	4	26	274	325	99	534	1614	713
		Mar 09 – Jul 09	18	34	307	27	3	17	319	327	120	563	1735	772

ASB Incident Types in the City West Area Neighbourhood, by Ward

Please Note

Incident levels for each of the wards may not be consistent with the official figures that will be published by the Force and Home Office. This is because the data system used to draw the level of detail needed for the ASB type breakdown for this report may not contain precise locations due to the way incidents are reported e.g. ASB reported where ward boundaries lie could initially be recorded in the neighbouring ward but subsequently corrected.

These figures should only be used as a guide and not regarded as official statistics for publication.

			Abandoned Vehicle	Animal Problems	Begging/Vagrancy	Hoax call to emergency services	Litter	Malicious/Nuisance Communication	Noise	Prejudice Incident	Rowdy & Inconsiderate Behaviour	Rowdy/Nuisance Neighbours	Rowdy/Nuisance Use/Sale/Fireworks	Street Drinking	Trespass	Vehicle related nuisance/Inappropriate Vehicle use	Grand Total
N'hood	City West	<i>Mar 10 – Jul 10</i>	27	3	82	7	3	22	32	4	620	16	1	26	1	35	879
Wards	Newnham	<i>Mar 10 – Jul 10</i>	10	1	3	0	0	5	6	0	37	5	0	0	0	6	73
	Castle	<i>Mar 10 – Jul 10</i>	9	1	5	1	0	8	5	1	30	6	1	0	0	6	73
	Market	<i>Mar 10 – Jul 10</i>	8	1	74	6	3	9	21	3	553	5	0	26	1	23	733

6. Recommendations

The following Neighbourhood Priorities are recommended for consideration:

- Continuation of work to tackle anti-social congregation in public spaces across Market Ward
- Reducing cycle thefts across City West